



RMIG City Emotion

we make ideas come to life



Maison du Portugal

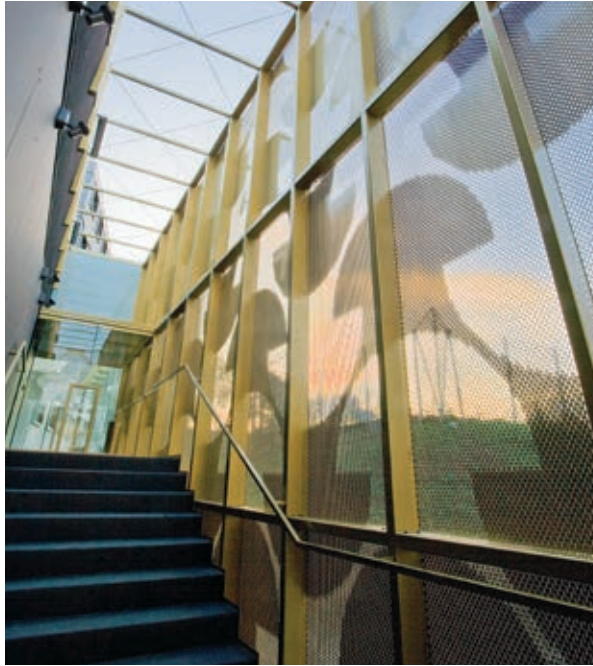
A revitalised students' home

THE ARCHITECT'S GOAL OF GIVING A NEW IDENTITY TO THE MAISON DU PORTUGAL HAS BEEN ACHIEVED BY CREATING A TRANSLUCENT FACADE WITH PERFORATED ALUMINIUM PANELS FROM RMIG

THE FACTS BEHIND AN ARCHITECTURAL FACELIFT

Perforated panels from RMIG played a vital role in giving a new identity and character to the Maison du Portugal in Paris.

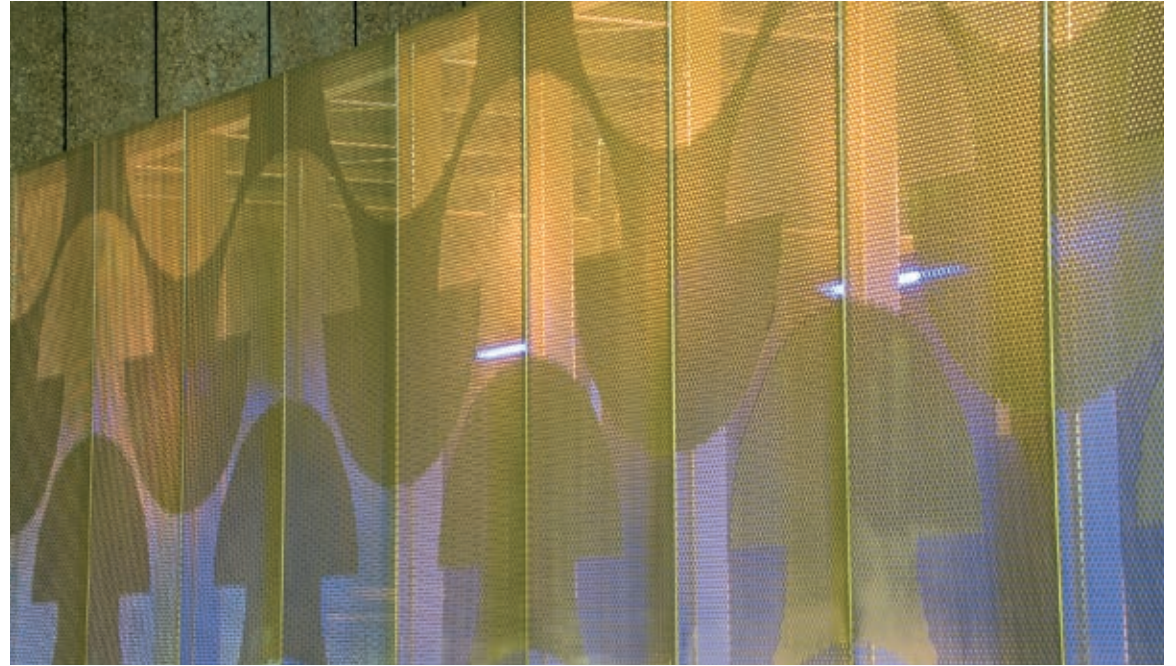
- Raw material: Aluminium EN 1050
- Pattern: RMIG ImagePerf
- Thickness: 3.0 mm
- Surface treatment: Wet paint coating
- Finishing operation: Bolt holes and bending
- Perforated area: 700 m²
- Architects: AAVP Architecture and Antonio Virga



BOLD SOLUTION WITH AN EXTERIOR CLADDING

The Maison du Portugal, officially known as Résidence André de Gouveia, provides accommodation for 170 students and is one of 39 buildings within the City of Paris International University. A major renovation scheme for the Maison du Portugal encompassed both the facade and the building's interior.

Architects Vincent Parreira and Antonio Virga were responsible for this project and wanted to give a new identity to the building by improving the character of the original structure from 1967 and making it more prominent in relation to its surroundings. To achieve this goal, they chose a bold solution with an exterior cladding made of perforated aluminium panels.



A TRANSLUCENT VEIL AROUND THE BUILDING

By using precision perforated aluminium sheets from RMIG's City Emotion programme, the architects were able to explore the properties of reflected light, making it possible for them to design a facade that creates a translucent veil around the building. A facade of this kind filters the sun's rays during the day and produces a subtle shimmering effect when the building is lit up at night and each of the 250 perforated panels were given a painted gold finish to enhance this effect even more. A complex sequence of perforations, using patterns with the same pitch but different hole sizes, creates a repeating geometric design which runs through the entire facade.



More than just buildings

RMIG City Emotion is for everyone who values the beautiful and innovative qualities of our cities, because a city is not just about buildings. A city is a place for emotion and it requires our full attention to unleash its aesthetic appeal.

RMIG City Emotion captures the passion for creative urban design by offering innovative technologies and materials. We can help you realise the most ambitious architectural projects and their emotional potential.

- Let us guide you through the benefits and practicality of your design
- We can work on your drawings in CAD, 2D and 3D formats
- Use perforated sheets, embossed sheets or expanded metal
- Enjoy the unique finishing operations and surface treatments

RMIG is the world's largest manufacturer and supplier of perforated metal. In addition to exterior cladding, the company also supplies products for a large number of construction applications such as car park and security screening, acoustic wall linings, ceilings, lighting, street furniture, balustrades and walkways.

Austria +43 2256 62482
info.at@rmig.com

Belgium +32 53 76 77 40
info.be@rmig.com

Denmark +45 44 20 88 00
info.dk@rmig.com

France +33 4 72 47 43 43
info.fr@rmig.com

Germany +49 34 906 50 0
info.de@rmig.com

Italy +39 010 740 3939
info.it@rmig.com

The Netherlands +31 184 491 919
info.nl@rmig.com

Norway +47 33 33 66 66
info.no@rmig.com

Poland +48 61 88 63 270
info.pl@rmig.com

Sweden +46 501 682 00
info.se@rmig.com

Switzerland +41 62 287 88 88
info.ch@rmig.com

United Kingdom +44 1925 839 610
info.uk@rmig.com

Other locations +45 44 20 88 00
info@rmig.com

WWW.CITY-EMOTION.COM

